



MultiBio 700

Multibiometric Access Control and
Time & Attendance Reader

Modern, accurate and affordable...
standalone fingerprint, facial and RFID readers



MultiBiometric technology:

Identify or verify users by their face, fingerprint, proximity card or PIN/Password... or any combination, all conveniently from a single device. Built-in Infrared light source enables operation in dimly lit rooms.



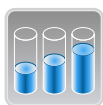
Communication:

MultiBio 700 installs easily on your network having both TCP/IP and RS232/485 serial ports. Its USB port allows for offline data backup and management when the network is unavailable.



Display/Audio:

Stunning 3" color TFT touch screen provides ease of use and rich user experience with intuitive and user friendly GUI. Includes both voice and visual prompts which indicate the acceptance or rejection of fingerprint, face, ID card or PIN/Password.



Capacity:

Supports one to many (1: N) matching for up to 400 faces and 5,000 templates or 20,000 cards/badges. Stores up to 100,000 transactions.



Access control:

Contact Relays for door locks, exit button, alarms & bell. Supports 50 time zones, 99 groups and 10 unlock combinations. Wiegand IN and OUT ports can be used to connect MultiBio 700 to any ZK or 3rd party access control panels and peripherals.



Options:

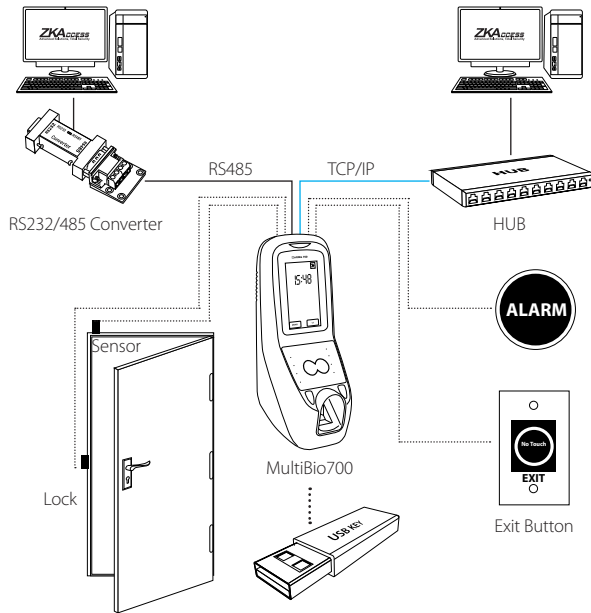
MultiBio 700 can be configured with optional internal modules which read HID Prox, HID iclass or 13.56 MHz Mifare cards.



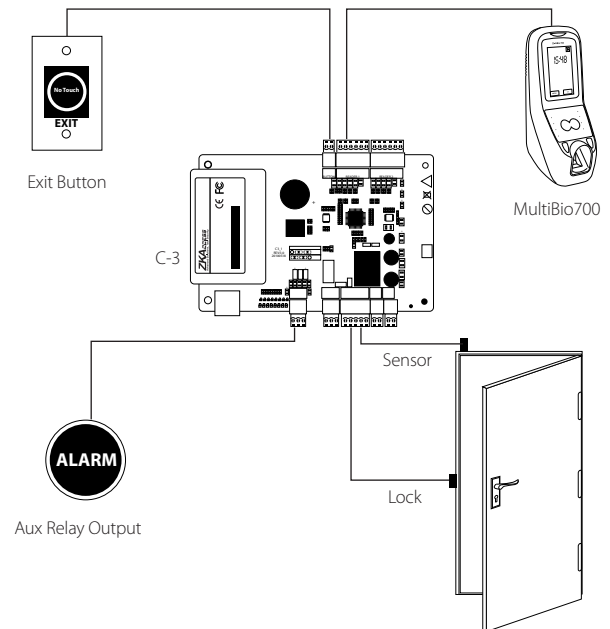
For Software Developers:

Free SDK and development tools are available for developers/partners who wish to integrate MultiBio 700 with any application which requires verifying people. Custom development is also available for OEM partners upon request.

Standalone Installation



Installation with Access Control Panel



Specifications

Capacity

Face: 400 (expandable to 3,000)
Fingerprint: 2000 (expandable to 5,000)
Card: 10000 (optional)

Display

3 inch TFT Touch Screen Display

Camera and Light Source

640 x 480 pixel camera
 Highly efficient Infra Red Light Source

Communication

Ethernet, RS 232, RS485, Weigand Input and Output, USB Host

Power

12V DC, 3A

Environment

Operating Temperature:
 32° to 113° F (0° to 45° C)
 Operating Humidity: 20% to 80%

Dimensions

Length: 7.7 inches (19cm),
Width: 3.9 inches (10cm),
Height: 10.8 inches (27cm)
Weight: 3lbs (1.36kg)

Supported Card Formats

ID Card
 HID Card
 Mifare Card

Part Numbers

MultiBio 700

MultiBio 700-ID with Proximity card reader

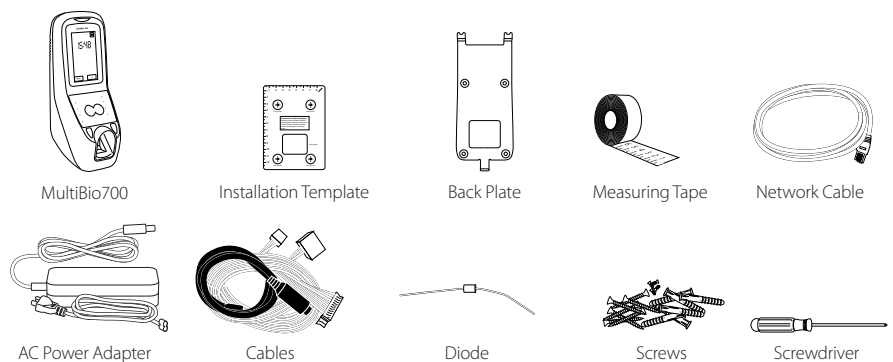
MultiBio 700-HID with HID card reader

MultiBio 700-M with Mifare card reader



Design and Specifications subject to change without notice

What's in the Box



ZKAccess

201 Circle Drive North, Suite 116
 Piscataway, NJ 08854, USA
 Tel: +1 732-412-6007
 Fax: +1 732-412-6008
 sales@zkaccess.com
 zkaccess.com